

**Schedule of Proposed Minor Modifications
to the Partial Review of the Cherwell Local Plan
September 2019**

These are modifications to the Proposed Submission Plan (July 2017) following receipt of the Inspector’s Post Hearing Advice Note (July 2019). This document replaces the published Proposed Focused Changes and Minor Modifications - February 2018

The proposed Modifications to the Partial Review of the Cherwell Local Plan Proposed Submission Plan July 2017 comprise the Schedule of proposed Main and Minor Modifications, the attached Minor Proposed Map Changes and Infrastructure Schedule.

New text is shown in **bold and underlined**. Deleted text is shown in **bold and ~~struckthrough~~**.

Minor modifications – generally cover factual updates, typographical corrections and presentational improvements

The reasons for changes and modifications are further explained in the Council’s published Explanatory note (September 2019)

Proposed modifications highlighted in grey are those suggested since receipt of the Inspector’s Advice Note.

MINOR MODIFICATIONS					
Ref No.	Page no.	Section/Policy/Paragraph/ Table/Diagram	Reference	Proposed Change	Reason
Min 1	-	Whole Plan	All Relevant Maps	Update the copyright on all maps (see attached Proposed Map Changes)	Updating
Min 2	-	Whole Plan	All Relevant Maps	Improve the scale bars on all maps (see attached Proposed Map Changes)	Presentation
Min 3	-	Whole Plan	All Relevant Maps	Improve differentiation between mapping designations/shading and ensure all mapping layers are clearly visible and ensure consistency with adopted Local Plan (see attached Proposed Map Changes)	Presentation
Min 4	-	Whole Plan	All Relevant Maps	Ensure all proposed land allocations appear on other policy maps (e.g. Policy PR6b on the map for Policy PR6a) and add labels for the policies being illustrated (see attached Proposed Map Changes)	Presentation
Min 5	-	Whole Plan	All Relevant Maps	Update layer including to show correct symbolology/labelling for Ancient Woodland	Presentational Correction / Representation PR-C-0766 from BBOWT
Min 6	-	Whole Plan	All Relevant Maps	Replace BAP habitat layer with S.41 NERC Act layer	Presentational correction
Min 7	-	Whole Plan	All Relevant Maps	Show Local Wildlife Sites	Presentational correction

MINOR MODIFICATIONS					
Ref No.	Page no.	Section/Policy/Paragraph/ Table/Diagram	Reference	Proposed Change	Reason
Min 8	-	Whole Plan	All Relevant maps	Ensure Conservation Target Area layer is clearly visible on all maps (see attached Proposed Map Changes)	Presentational correction
Min 9	-	Whole Plan	Plan Text and Footnotes	Update hyperlink to Evidence List on the Council's new website and document references.	Update
Min 10	-	All policies Maps - key	All policies Maps - key	Replace site reference number <u>on the key</u> with red site boundary notation and label it 'site boundary'.	Plan Improvement / clarification
Min 11	Page 9	Executive Summary, Paragraph xxii.	2nd sentence	Amend to read as 'The policy makes it clear that if monitoring indicates that the vision and objectives cannot be met, the Council will consider whether it wishes to ask the Secretary of State for Housing, Communities and Local Government to...'	Change to the Secretary of State's title
Min 12	Page 21	Table 3	Vale of White Horse	Replace '220' with ' 2200 '	Typo
Min 13	Page 21	Text Box (Memorandum of Cooperation, November 2016)	2 nd para.	Amend paragraph to read 'The Programme does not seek to identify, propose or recommend any site or sites for additional housing within any district. Each LPA will remain responsible for the allocation of housing sites within any district. Each LPA will remain responsible for the allocation of housing sites within its own district and through its own Local Plan process.'	Copy/paste error

MINOR MODIFICATIONS					
Ref No.	Page no.	Section/Policy/Paragraph/ Table/Diagram	Reference	Proposed Change	Reason
Min 14	Page 35	Paragraph 3.17	-	In this growth context, the Oxfordshire councils continue to cooperate on cross-boundary strategic matters, including on an Oxfordshire Infrastructure Strategy (OxIS)(30), the first stage of which was completed in April 2017.	Updating / OxIS Stage 2 (November 2017) recently published
Min 15	Page 65	Figure 10: Spatial Strategy – Key Diagram	Site PR7a	Extend proposed growth area	Consequential change
Min 16	Page 65	Figure 10: Spatial Strategy – Key Diagram	Site PR7b	Extend proposed growth area	Consequential change
Min 17	Page 65	Figure 10: Spatial Strategy – Key Diagram	Site PR9	Extend proposed growth area	Consequential change
Min 18	Page 65	Figure 10: Spatial Strategy – Key Diagram	Site PR10	Remove whole site from diagram	Consequential change
Min 19	Page 66	Para 5.17	Point 2	Amend to read 'the clear inability for Oxford City to fully meet its own housing needs'	Clarification
Min 20	Page 76	Para 5.39	PR3(c)	Amend to read 'Following the development of land to the north of Oxford and to the west of Oxford Road, the A34 will form the logical, permanent Green Belt boundary in is this location.	Correction
Min 21	Page 77	Policy PR3 - The Oxford Green Belt	Paragraph 5.39 PR3(e)	Amend the third sentence of paragraph 5.39 PR3 (e) to read: 'The potential extension of the Science Park will be considered further in the next Local Plan Local Plan Part 2.	Update to LDS dated December 2018.

MINOR MODIFICATIONS					
Ref No.	Page no.	Section/Policy/Paragraph/ Table/Diagram	Reference	Proposed Change	Reason
Min 22	Page 78	Policy PR3	(b)	Amend to read: '0.7 hectares of land adjoining and to the west of the railway (to the east of the strategic development site allocated under policy PR8 as shown on inset Policies Map PR8 the map at Appendix 2)	Presentational updating reflecting the effect of removing land from the Green Belt that is not safeguarded beyond the Plan period
Min 23	Page 78	Policy PR3	(c)	Amend to read: '11.8 hectares of land south of the A34 and west of the railway line (to the west of the strategic development site allocated under policy PR6b as shown on inset Policies Map PR6b the map at Appendix 2) '	Presentational updating reflecting the effect of removing land from the Green Belt that is not safeguarded beyond the Plan period
Min 24	Page 78	Policy PR3	(d)	Amend to read: '9.9 hectares of land comprising the existing Oxford Parkway Railway Station and the Water Eaton Park and Ride (as shown on inset Policies Map 6a the map at Appendix 2) '	Presentational updating reflecting the effect of removing land from the Green Belt that is not safeguarded beyond the Plan period
Min 25	Page 78	Policy PR3	(e)	Amend to read: '14.7 hectares of land to the north, east and west of Begbroke Science Park (as shown on inset Policies Map PR8 the map at Appendix 2) '	Typo and presentational updating reflecting the effect of removing land from the Green Belt that is not safeguarded beyond the Plan period
Min 26	Page 80	Paragraph 5.57	2 nd sentence	Amend to read 'In particular cycle improvements between Oxford Parkway and Cutteslowe	Grammatical correction

MINOR MODIFICATIONS

Ref No.	Page no.	Section/Policy/Paragraph/ Table/Diagram	Reference	Proposed Change	Reason
				Roundabout could help to complete an improved route between Kidlington and Oxford'.	
Min 27	Page 88	Paragraph 5.78	Line 3	Amend to read '...far outweigh the those adverse effects...'	Grammatical correction
Min 28	Page 89	Policies Map	Policy PR6a	Remove 'existing green space' falling within Oxford City Council's administrative boundary.	In response to a request from Oxford City Council
Min 29	Page 95	Policies Map	Policy PR6b	Remove 'existing green space' falling within Oxford City Council's administrative boundary.	In response to a request from Oxford City Council
Min 30	Page 100	Policies Map	Policy PR6c	Remove 'existing green space' falling within Oxford City Council's administrative boundary.	In response to a request from Oxford City Council
Min 31	Page 101	Policy PR6c	1 st paragraph	Amend to read 'Land at Frieze Farm (30 hectares) will be reserved.....'	Plan improvement
Min 32	Page 105	Paragraph 5.697	Paragraph number	Renumber paragraph no. 5.697 as ' 5.97 '	Typo
Min 33	Page 111	Policy PR7b – Policies Map	Land at Stratfield Farm	Indicate location of orchard referred to in Policy PR7b, point 6 (See attached Proposed Map Changes)	Presentational correction
Min 34	Page 112	Policy PR7b	Point 8	Amend to read '...Land East of the A44 (PR9) (PR8) across the Oxford Canal,....'	Typo

MINOR MODIFICATIONS

Ref No.	Page no.	Section/Policy/Paragraph/ Table/Diagram	Reference	Proposed Change	Reason
Min 35	Page 113	Policy PR7b – Land at Stratfield Farm	PR7b – 10 (g)	Amend to read: The maintenance and enhancement of significant the protected trees, existing tree lines and hedgerows.	Correction.
Min 36	Page 114	Policy PR7b	Point 13	Amend to read ‘...phase 1 habitat survey including an a habitat suitability index...’	Typo
Min 37	Page 123	Policy PR8	Point 18 (m)	A An outline scheme for vehicular access by the emergency services	Typo
Min 38	Page 132	Policy PR9 - Land West of Yarnton	Policy PR 9 - point 15	Amend to read: The application shall be supported by a Heritage Impact Assessment which will include identify measures to avoid or minimise conflict with identified heritage assets within or adjacent to the site’ (point 15 ends)	Plan improvement
Min 39	Page 137	Paragraph 5.139	-	Amend to read: ‘...and the emerging Cherwell Design Guide’	Future proofing for SPD adoption
Min 40	Page 148	Policy PR11 – Infrastructure Delivery	Point 2	Amend to read: ‘Completing and keeping up-to-date a Development perment Contributions Supplementary Planning Document...’	Typo
Min 41	Page 149	Paragraph 5.157	1 st sentence	Amend to read: ‘We need <u>to</u> ensure...’	Grammatical error
Min 42	Page 155	Policy PR13 – Monitoring and Securing Delivery	Final paragraph	Amend to read: ‘If monitoring indicates that the vision and objectives cannot be met, the Council will consider whether it wishes to ask the Secretary of	Change to Secretary of State's title.

MINOR MODIFICATIONS					
Ref No.	Page no.	Section/Policy/Paragraph/ Table/Diagram	Reference	Proposed Change	Reason
				State for Housing , Communities and Local Government to....'	
Min 43	Page 158	Appendix 1 - Policies Map	Policies Map	Add PR3a reference on Policies Map for the Safeguarded land to the south of policy PR8.	Correction of error/Clarification.
Min 44	Page 158	Appendix 1 - Policies Map	Policies Map	Update reflecting changes to other Policies Maps (see attached)	Updating for consistency
Min 45	Page 160	Appendix 2 - Green Belt Plan	Proposed Changes to the Green Belt within Cherwell District	Add labels for PR3a, PR3b, PR3c, PR3d and PR3e	Presentational clarification
Min 46	Page 160	Appendix 2 – Green Belt Plan	Proposed Changes to the Green Belt in Cherwell District	Amend Green Belt to be removed for sites PR7a, PR7b and PR9	Consequential change
Min 47	Page 162	Appendix 3 – Housing Trajectory	Allocation Column	Insert lines to identify 5 year period	Presentational correction
Min 48	Page 184	Appendix 5 – Monitoring Framework	Policy PR3 Local Plan Indicators	PR7a- replace 10.75 ha with 20.7 ha Add PR7 b– 5.2 ha PR9 – replace 17.6 ha with 27.2 ha	Correction/consequential change

MINOR MODIFICATIONS

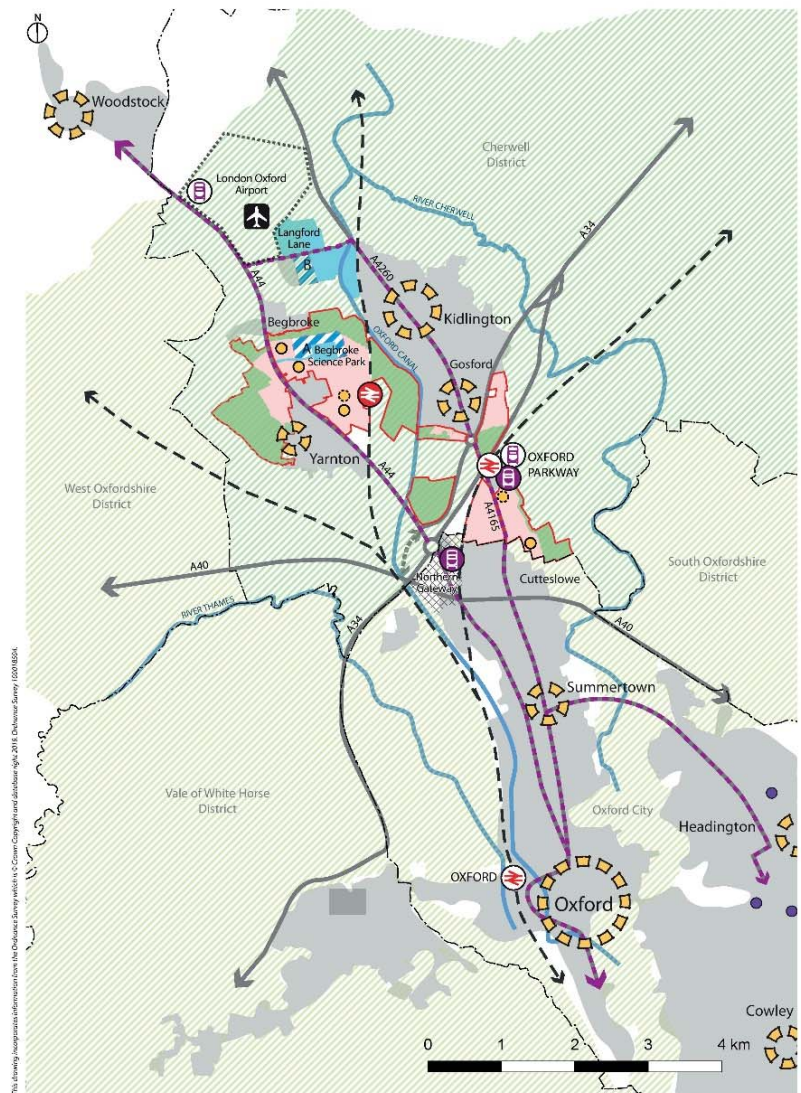
Ref No.	Page no.	Section/Policy/Paragraph/ Table/Diagram	Reference	Proposed Change	Reason
Min 49	Page 185	Appendix 5 – Monitoring Framework	Policy PR6a Local Plan Indicators	Delete Local Plan Indicators and replace with <u>'Residential completions'</u>	For consistency
Min 50	Page 186	Appendix 5 – Monitoring Framework	Policy PR10	Delete row associated with PR10	Consequential Change
Min 51	Page 190-191	Appendix 6 - Thematic Maps	-	Make the following changes to the theme maps - Remove Woodstock housing allocation and the associated green infrastructure and sports provision at site: PR10:	Consequential change
Min 52	Page 193	Appendix 7 - Evidence Base	-	Update Evidence link as follows: https://www.cherwell.gov.uk/info/112/evidence-base/369/local-plan-part-1-partial-review---evidence-base	Updating

Cherwell Local Plan 2011 – 2031 (Part 1) - Partial Review of the Cherwell Local Plan – Oxford’s Unmet Housing Needs

Proposed Minor Map Changes

September 2019

Figure 10: Spatial Strategy – Key Diagram

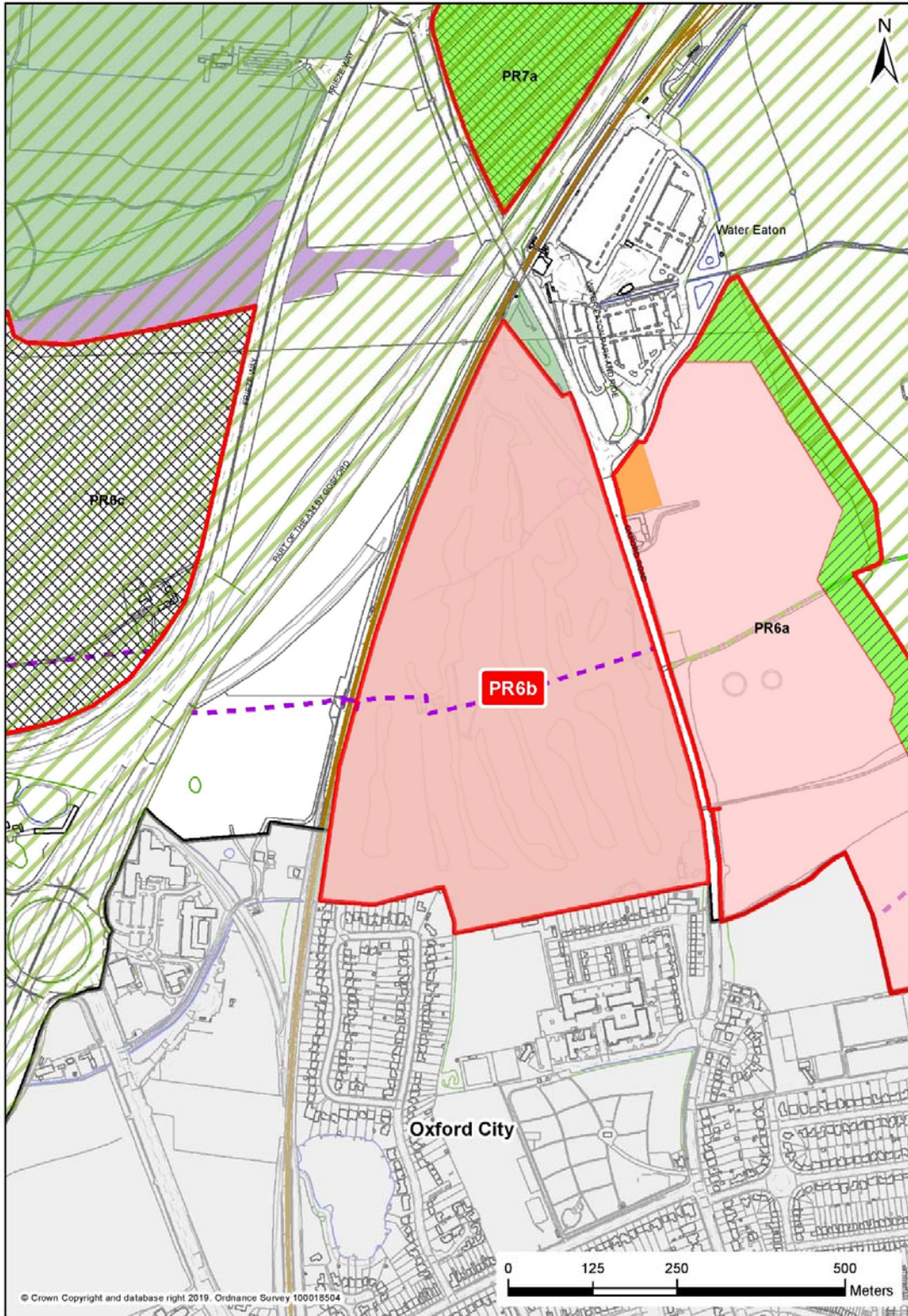


This strategy incorporates information from the Oxford City Council Strategic Planning and Development Study 2011. Oxford Survey 10008504.

Key Diagram - For Illustrative Purposes Only

- | | | |
|---|--|--|
| <p>Key</p> <ul style="list-style-type: none"> Allocation site boundaries District boundaries Green Belt Existing settlement Proposed residential development Proposed green infrastructure and formal recreation provision | <ul style="list-style-type: none"> Existing centres Proposed local centres Proposed schools Existing hospitals Existing employment area Proposed employment area A: land reserved for extension to Science Park B: permission granted for Technology Park Oxford City proposed Northern Gateway development | <ul style="list-style-type: none"> Sustainable movement corridors Rail lines Existing rail station Potential new rail station London Oxford Airport Existing Park & Ride New or expanded Park & Ride County Council proposed link road |
|---|--|--|

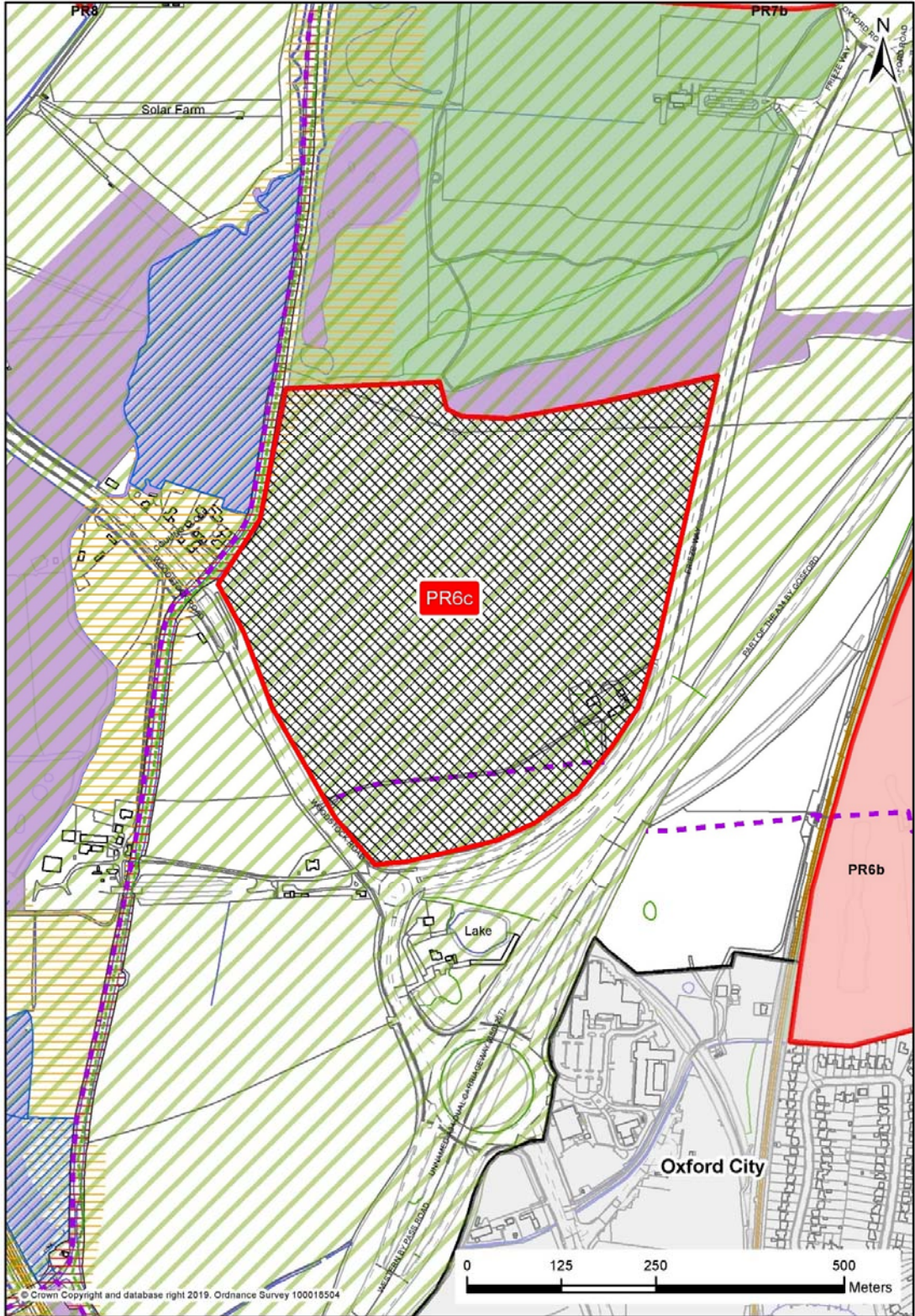
Policy PR6b Map – Land West of Oxford Road



Policy PR6b Key

	Site Boundary
	Cherwell District
	Existing Green Space
	Local Centre
	NERC Act. S41
	New Green Space/Parks
	Outdoor Sports Provision
	Oxford City
	Public Bridleway
	Public Footpath
	Reserved Site for Golf Course Replacement
	Residential
	Revised Green Belt

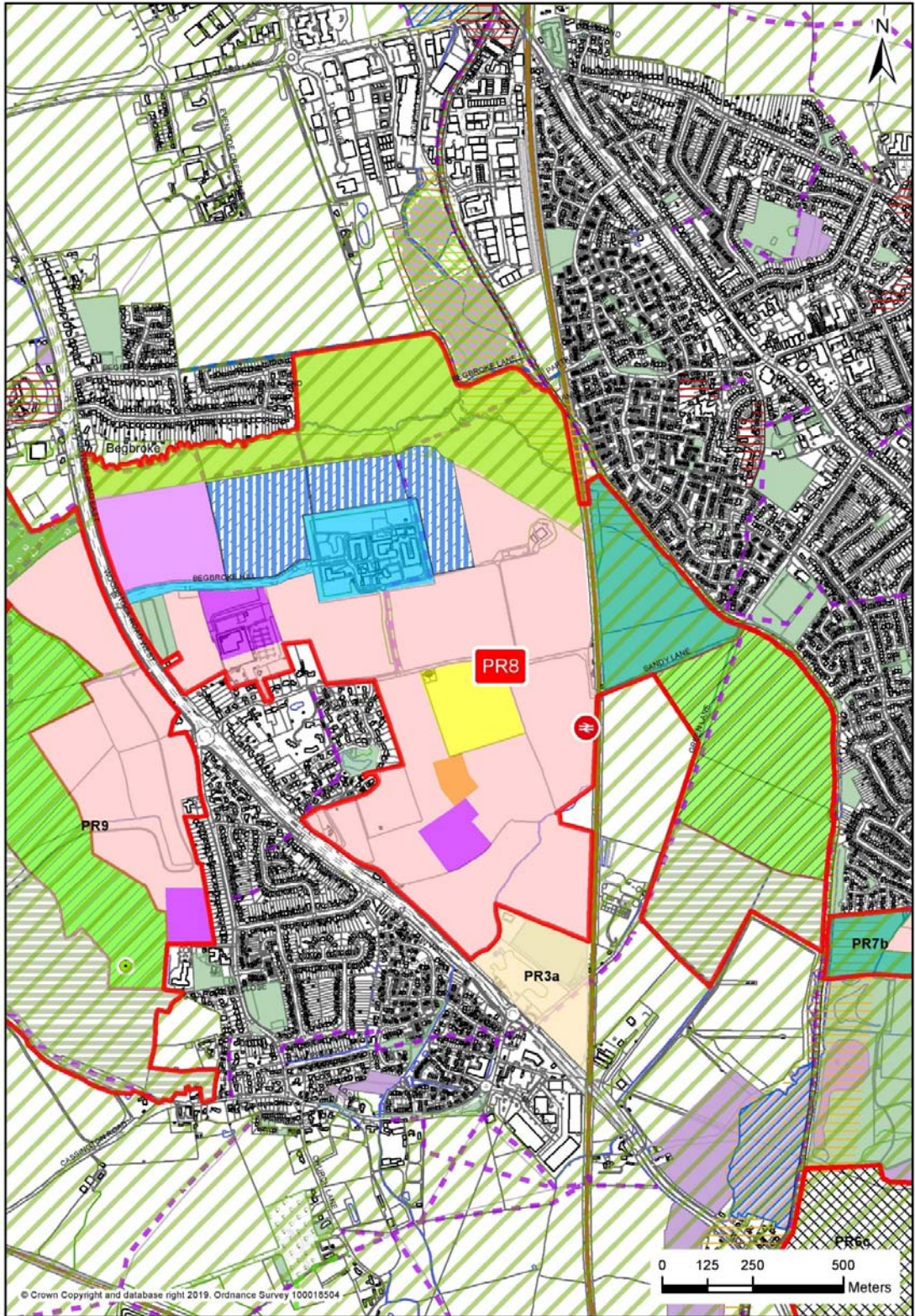
Policy PR6c Map – Land at Frieze Farm



Policy PR6c Key

	Site Boundary
	Cherwell District
	Conservation Areas
	Conservation Target Areas
	Existing Green Space
	Local Wildlife Site
	NERC Act. S41
	Oxford Canal Trail
	Oxford City
	Public Footpath
	Reserved Site for Golf Course Replacement
	Residential
	Revised Green Belt

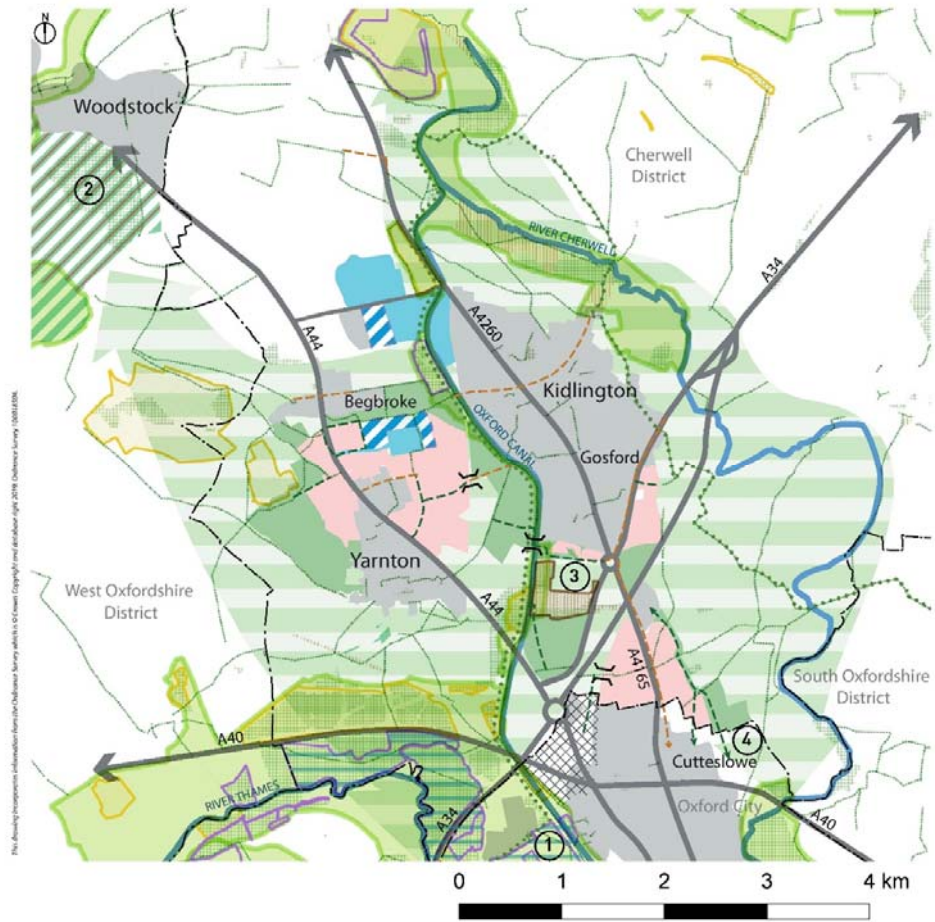
Policy PR8 Map – Land East of the A44



Policy PR8 Key

	Site Boundary		Public Bridleway
	Community Woodland		Public Footpath
	Conservation Areas		Restricted Byway
	Conservation Target Areas		Reserved Land for Railway Station Halt
	Existing Begbroke Science Park		Reserved Site for Golf Course Replacement
	Existing Green Space		Residential
	Former Landfill Site		Retained Agricultural Land
	Historic Parks and Gardens		Revised Green Belt
	Land Reserved for Employment		Secondary School Use
	Local Centre		Site of Special Scientific Interest (SSSI)
	Local Nature Reserve		
	Local Nature Reserve		
	Local Wildlife Site		
	Nature Conservation Area		
	NERC Act. S41		
	New Green Space/Parks		
	Oxford Canal Trail		
	PR3a (Safeguarded Land)		
	Primary School Use		

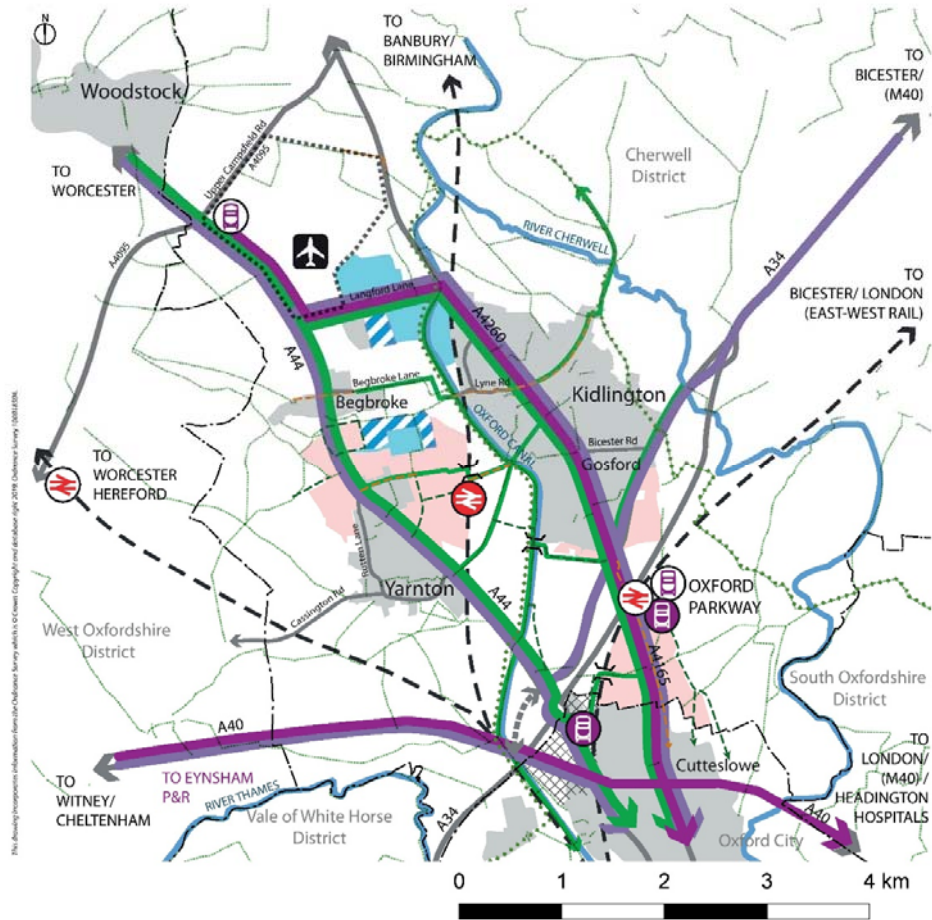
Thematic Maps



Green Corridors - For Illustrative Purposes Only

Key	District Wildlife Site	Existing public right of way
District boundaries	Local Wildlife Site	Proposed new pedestrian, wheelchair and all-weather cycle route
Primary waterways	SSSI	Proposed walking route on street
Strategic green corridor	Habitat of Principal Importance (NERC 541 Act, previously BAP)	Green Belt Way
Existing settlement	Conservation Target Area	Pedestrian / cycle bridges (wheelchair accessible)
Proposed residential development	Woodland Trust Site	Key green infrastructure
Existing employment area	Special Areas of Conservation	Proposed green infrastructure and formal recreation provision
Proposed employment area	World Heritage Site	SSSI Port Meadow SSSI
Oxford City proposed Northern Gateway development	Historic Park and Garden	Blenheim Palace
		Stratfield Brake
		Cutteslowe Park

Thematic Maps



Sustainable Movement Thematic Plan - For Illustrative Purposes Only

Key	Rail lines	Bus Rapid Transit
District boundaries	Existing rail station	Other Park & Ride and premium bus routes
Primary waterways	Potential new rail station	Strategic cycle routes
Existing settlement	London Oxford Airport	Other key cycle routes
Proposed residential development	Existing Park & Ride	Pedestrian / cycle bridges (wheelchair accessible)
Existing employment area	New or expanded Park & Ride	Existing public right of way
Proposed employment area	County Council proposed link road	Proposed new pedestrian, wheelchair and all-weather cycle route
Oxford City proposed Northern Gateway development	Proposed walking route on street	Green Belt Way